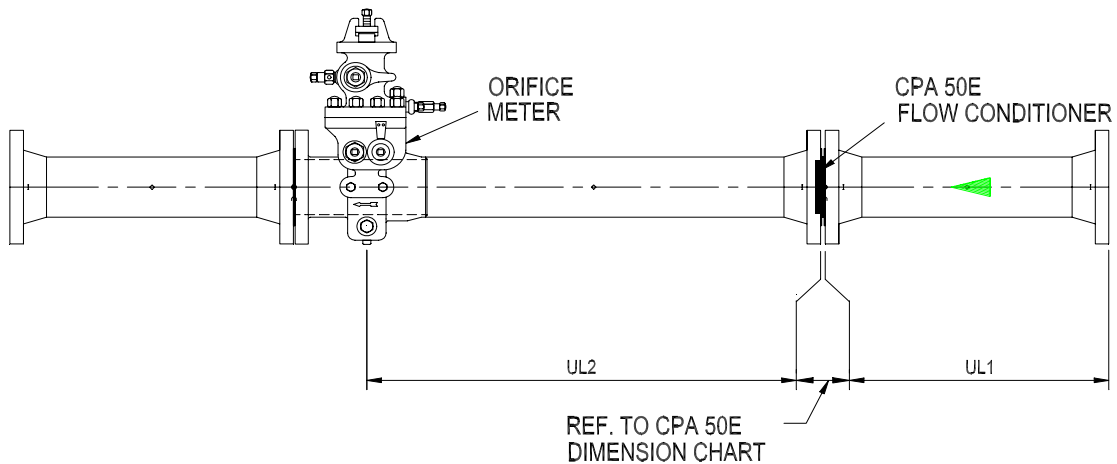


CPA 50E Installation Specifications

CPA 50E / Orifice Meter:

DIMENSIONS LISTED ARE MINIMUMS; ANY COMBINATION OF UL1 & UL2 LONGER THAN LISTED IS ACCEPTABLE



ORIFICE METER RUN LENGTHS - To the nearest inch			
NPS	SCHEDULE	UL1 (5 Dia.)	UL2 (8 Dia.)
2	40/80	10	16
3	40/80	15	24
4	40/80	20	32
6	40/80	30	48
8	40/STD.	40	64
8	80/XS	38	61
10	40/STD.	50	80
10	60/XS	49	78
10	80	48	76.5
12	STD.	60	96
12	40	60	95.5
12	XS	59	94
12	80	57	91
16	STD.	76	122
16	40/XS	75	120
16	80	71.5	114.5
20	40	94	150.5
20	80	89.5	143.5
24	40	113	181
24	80	108	172.5

THESE DIMENSIONS ARE RECOMMENDED MINIMUM LENGTHS.

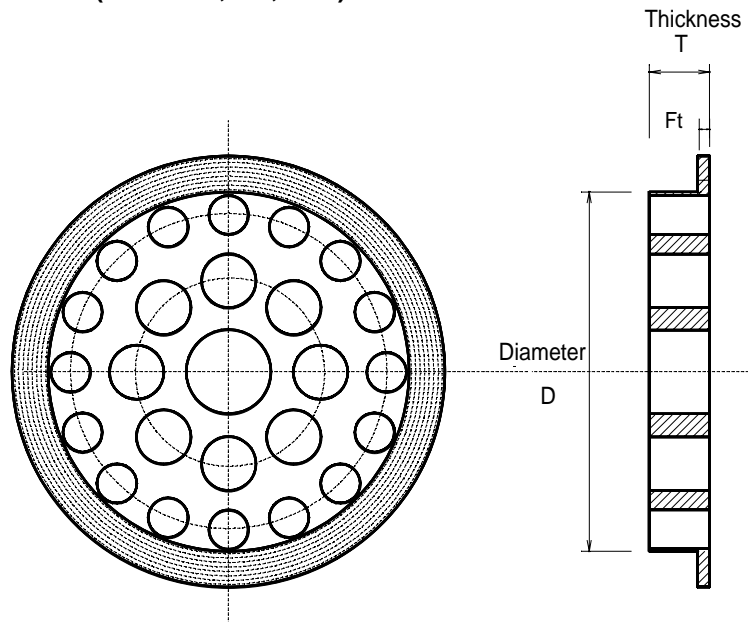
THIS DRAWING DOES NOT REPLACE THE STANDARD.

THERE ARE OTHER REQUIREMENTS FOR A COMPLIANT METER RUN AND THE STANDARD MUST BE CAREFULLY FOLLOWED.



CPA 50E Dimensional Specifications (Type A)

Standard Dimensions (ANSI 300,600,900#)



Size	D – Diameter		T – Thickness		Ft – Flange Thickness
	Sch 40	Sch 80	Sch 40	Sch 80	
1 1/2	1.610	1.500	0.240	0.225	0.125
2	2.067	1.939	0.310	0.290	0.125
3	3.068	2.900	0.460	0.435	0.250
4	4.026	3.826	0.600	0.574	0.250
6	6.065	5.761	0.900	0.864	0.250
8	7.981	7.625	1.190	1.144	0.250
10	10.020	9.562	1.500	1.434	0.250
12	11.938	11.374	1.790	1.700	0.250
16	15.000	14.312	2.250	2.147	0.250
20	18.812	17.938	2.820	2.690	0.375
24	22.624	21.562	3.390	3.230	0.500

Notes:

1. Dimensions in inches
2. Other sizes and specifications available, please contact us



1-888-349-3569

Canada Pipeline Accessories

<http://www.flowconditioner.com>